

If you cannot read the information below, [click here](#).



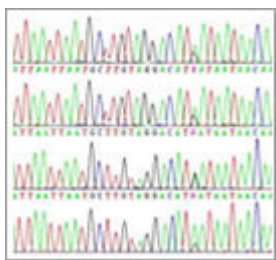
eNewsletter

Issue #02, March 2008

Article

In forensics, the evidence points to single cell analysis

Forensic scientists are achieving greater sensitivity at a lower cost with single cell analysis. Dr. Sabine Lutz-Bonengel describes the benefits of using the AmpliGrid platform in her research at the Institute of Legal Medicine, Albert-Ludwig University. "We wanted to see how sensitive the AmpliGrid could be for mtDNA analysis and found the 1 µl reaction to be superior to conventional assays," Dr. Lutz-Bonengel said.



[▶ Read Article \(pdf\)](#)

Application Report

No template preparation required

DNA amplification and cycle sequencing are now possible in a low volume reaction format using single cells as the template source. Using Advalytix' AmpliGrid technology, DNA amplification doesn't require any template preparation. Due to the flexibility of this technology, PCR and cycle sequencing can be performed on the same reaction site of the AmpliGrid AG480F.



Shows & Events

See the AmpliGrid System

Traveling to the annual conferences listed below? You can see the AmpliGrid system and meet with Advalytix representatives.

North America

- Experimental Biology/ AAI 2008
www.eb2008.org

San Diego, CA
Apr 5-9 2008

[▶ Go](#)

- American Association for Cancer Research, The Gel Company, Booth #2240
www.aacr.org

San Diego, CA
Apr 12-16 2008

[▶ Go](#)

- Quantitative PCR, Booth #27
San Diego, CA
Apr 20-23 2008

[▶ Go](#)

Europe

- Analytica, Hall A3, Booth 271
Munich, Germany
Apr 1-4 2008

[▶ Go](#)

- 19th Annual Meeting of The

[▶ Read Report \(pdf\)](#)

Application Report

Extraction without loss

Conventional PCR platforms can lose template DNA; yet by performing cell extraction and PCR in the same reaction site on the AmpliGrid, Advalytix delivers highly sensitive and improved single cell analysis. Download our complimentary application report, "Enhanced DNA Amplification from Single Cells Using Cell Extraction Technology," to learn how you can do this in your lab.

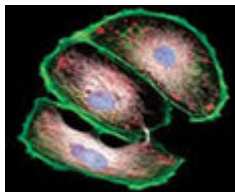


[▶ Read Report \(pdf\)](#)

Article

Harvard researcher takes it one cell at a time

Dr. Colette Cywes Bentley, principal investigator at The Channing Laboratory and assistant professor of medicine at Harvard Medical School, uses single-cell molecular analysis to discover how viral infection predisposes people to bacterial super-infections. Find out how the AmpliGrid platform and AmpliSpeed thermal cycler from Advalytix are helping Dr. Cywes Bentley advance her research, one cell at a time.



[▶ Read Article \(pdf\)](#)

German Society of Human Genetics

Hannover, Germany
Apr 8-10 2008

[▶ Go](#)

- **The XXIV International Congress of the International Society for Analytical Cytology**

Budapest, Hungary
May 17-21 2008

[▶ Go](#)

- **4th Conference on Analysis of Microbial Cells at the Single Cell Level**

Bad Schandau, Dresden, Germany
May 22-24 2008

[▶ Go](#)

- **2nd International Congress on Stem Cells and Tissue Formation**

Dresden, Germany
July 6-9 2008

[▶ Go](#)

[Terms of Use](#)

[Privacy Notice](#)

[Imprint](#)

[Website](#)

This is a commercial newsletter from Advalytix.

[Subscribe](#) to the Advalytix Enewsletter.

Thank you for your continued interest in Advalytix. We respect your time and privacy. If you would prefer not to receive future e-mails about our products or events, please [click here](#) to unsubscribe.