

Appendix for SB250: working with the denaturation chamber

notes



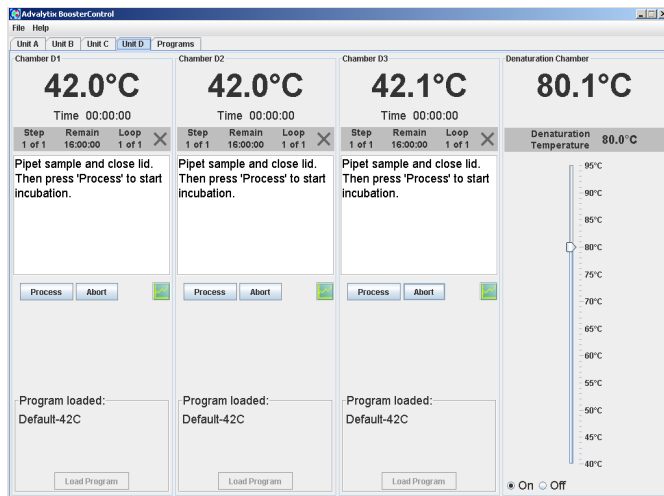
Technical specifications of denaturation chamber

Capacity: 6 slides

Slide Size: 24.5-26.0 mm x 76mm

Maximum Temperature: 95°C

Incubation Time: unlimited



Turn on the SlideBooster and launch the BoosterControl software.

The section on the very right of the screen represents the denaturation chamber of the SB600. At the top the current temperature of the chamber is displayed. Use the slide bar for the temperature setting. Once the chamber has reached the set temperature it is ready for use

! *The front of the denaturation oven can reach high temperatures. Take all necessary precautions to avoid burns.*

Insert the slides into the ports of the denaturation chamber holding the slides at the frosted end as shown in the picture.

! *Take care not to strip off the coverglass or lifterslip from the slide while inserting the slide into the denaturation chamber.*